

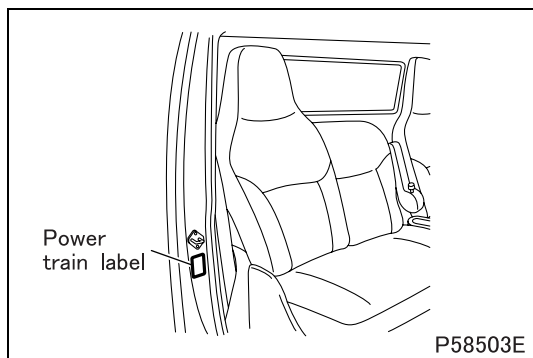
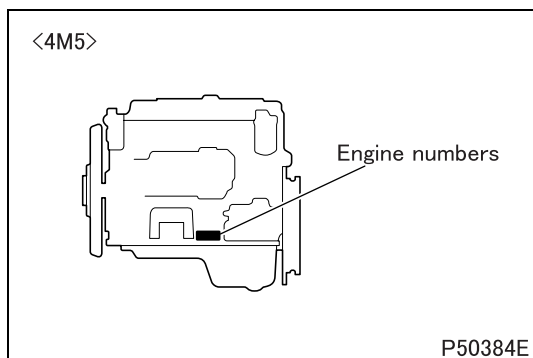
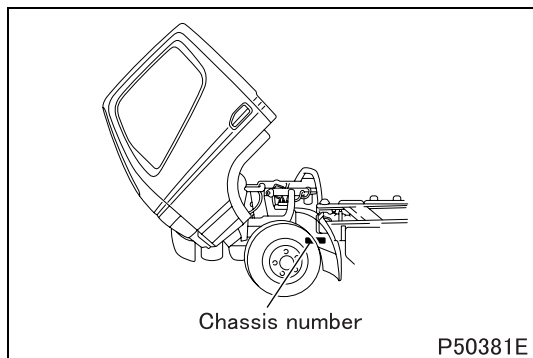
EQUIPMENT TYPE CODES LIST

Component	Name plate marking					Code description
Engine						
4M50-T	4	M	5	0	T	
	↑	↑	↑	↑	↑	Turbocharged Order of development within same series Order of development among different series Diesel engine No. of cylinders (4)
Clutch						
C5W33	C	5	W	33		
	↑	↑	↑	↑		Disc OD Facing material (W: Woven) Load carrying capacity of truck class (tonnage) on which the clutch is primarily used Initial letter of the clutch
Transmission						
M036S5W	M	036	S	5	W	
	↑	↑	↑	↑	↑	Variation (W: With directly-mounted transfer) Forward speeds Type of mesh (S: Synchromesh) Load carrying capacity of truck class (tonnage) on which the clutch is primarily used Initial letter of the transmission
Propeller shaft						
P3	P	3				
	↑	↑				Load carrying capacity of truck class (tonnage) on which the clutch is primarily used Initial letter of the propeller shaft
Front axle						
F200T	F	200	T			
	↑	↑	↑			Vehicle type (T: Truck) Load carrying capacity of truck class (tonnage) on which the clutch is primarily used Initial letter of the front axle
Rear axle						
R033T	R	03	3	T		
	↑	↑	↑	↑		Vehicle type (T: Truck) Order of development within same series Load carrying capacity of truck class (tonnage) on which the clutch is primarily used Initial letter of the rear axle
Reduction and differential						
D033H	D	03	3	H		
	↑	↑	↑	↑		Tooth profile (H: Hypoid gear) Order of development within same series Load carrying capacity of truck class (tonnage) on which the clutch is primarily used Initial letter of the reduction & differential

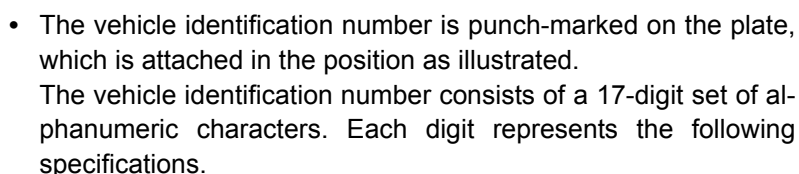
Vehicle model	Engine	Clutch	Transmission	Propeller shaft	Rear axle	Reduction & differential
FE83DDZSLSUA	4M50-T7	C5W33	M036S5	P3	R033T	D033H
FE83DEZSLSUA	4M50-T7	C5W33	M036S5	P3	R033T	D033H
FE83DGZSLSUA	4M50-T7	C5W33	M036S5	P3	R033T	D033H
FE83DDZSLSUB	4M50-T8	Torque converter	M036A6	P3	R033T	D033H
FE83DEZSLSUB	4M50-T8	Torque converter	M036A6	P3	R033T	D033H
FE83DGZSLSUB	4M50-T8	Torque converter	M036A6	P3	R033T	D033H
FE84DDZSLSUA	4M50-T7	C5W33	M036S5	P3	R033T	D033H
FE84DEZSLSUA	4M50-T7	C5W33	M036S5	P3	R033T	D033H
FE84DGZSLSUA	4M50-T7	C5W33	M036S5	P3	R033T	D033H
FE84DHZSLSUA	4M50-T7	C5W33	M036S5	P3	R033T	D033H
FE84DDZSLSUB	4M50-T8	Torque converter	M036A6	P3	R033T	D033H
FE84DEZSLSUB	4M50-T8	Torque converter	M036A6	P3	R033T	D033H
FE84DGZSLSUB	4M50-T8	Torque converter	M036A6	P3	R033T	D033H
FE84DHZSLSUB	4M50-T8	Torque converter	M036A6	P3	R033T	D033H
FE84DHWSLSUB	4M50-T8	Torque converter	M036A6	P3	R033T	D033H
FE85DDZSLSUC	4M50-T8	C5W33	M036S6	P3	R035T	D035H
FE85DEZSLSUC	4M50-T8	C5W33	M036S6	P3	R035T	D035H
FE85DGZSLSUC	4M50-T8	C5W33	M036S6	P3	R035T	D035H
FE85DHZSLSUC	4M50-T8	C5W33	M036S6	P3	R035T	D035H
FE85DJZSLSUC	4M50-T8	C5W33	M036S6	P3	R035T	D035H
FE85DDZSLSUB	4M50-T8	Torque converter	M036A6	P3	R035T	D035H
FE85DEZSLSUB	4M50-T8	Torque converter	M036A6	P3	R035T	D035H
FE85DGZSLSUB	4M50-T8	Torque converter	M036A6	P3	R035T	D035H
FE85DHZSLSUB	4M50-T8	Torque converter	M036A6	P3	R035T	D035H
FE85DJZSLSUB	4M50-T8	Torque converter	M036A6	P3	R035T	D035H
FG84DC6SLSUA	4M50-T7	C5W33	M036S5W	Front: P2 Rear: P3	R033T	Front: D1H Rear: D033H
FG84DE6SLSUA	4M50-T7	C5W33	M036S5W	Front: P2 Rear: P3	R033T	Front: D1H Rear: D033H

CHASSIS NUMBER, ENGINE NUMBER, POWER TRAIN LABEL

- Chassis and engine numbers are allocated to each vehicle and engine respectively in the order of production. These numbers are required at vehicle inspection for registration.



- Power train label located in the position illustrated indicates the vehicle model, chassis number and information relevant to the vehicle's power - train components.



(1)	Country	J:	Japan
(2)	Make	L:	Mitsubishi Fuso
(3)	Type	6:	Incomplete vehicle
(4)	Gross vehicle weight / Brake system		
		A:	10,001 to 14,000 lbs. / Hydraulic
		B:	14,001 to 16,000 lbs. / Hydraulic
		C:	16,001 to 19,500 lbs. / Hydraulic
(5)	Line	A:	FE83D
		B:	FE84D
		C:	FE85D
(6)	Series (Wheel base)	D:	2.9 to 3.19 m (9.51 to 10.46 ft.)
		E:	3.2 to 3.49 m (10.49 to 11.44 ft.)
(7)	Cab chassis type	1:	Chassis cab
(8)	Engine	S:	4.899 L Diesel turbo charged and charge air cooled
(9)	Check digit		
(10)	Model year	5:	2005
(11)	Plant	K:	Kawasaki
(12)	Plant sequential number		