

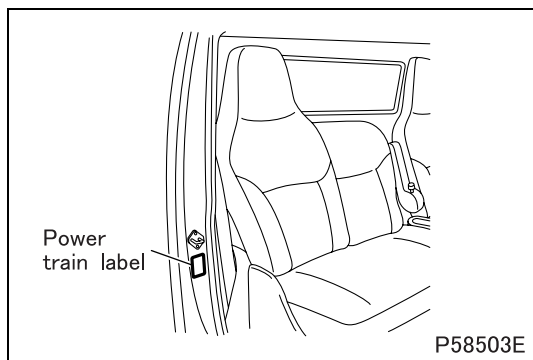
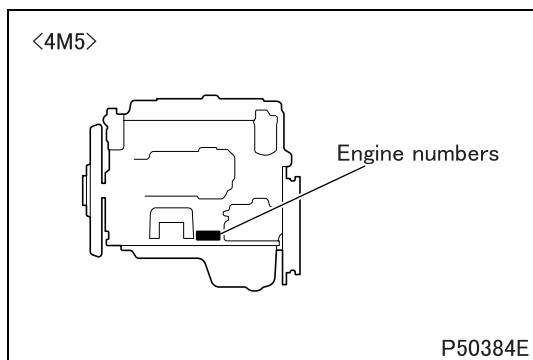
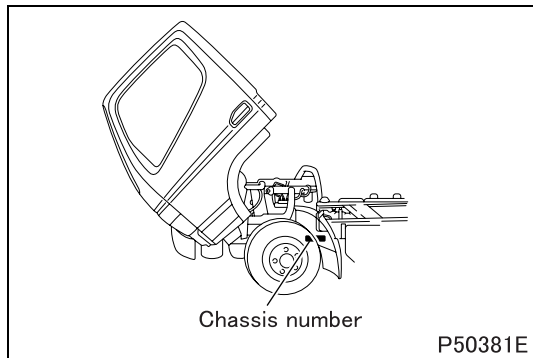
POWER TRAIN TABLE

00

Vehicle model	Engine	Clutch	Transmission	Propeller shaft	Rear axle	Reduction & differential
FE83DDZSLSUA	4M50-T7	C5W33	M036S5	P3	R033T	D033H
FE83DEZSLSUA	4M50-T7	C5W33	M036S5	P3	R033T	D033H
FE83DGZSLSUA	4M50-T7	C5W33	M036S5	P3	R033T	D033H
FE83DDZSLSUB	4M50-T8	Torque converter	M036A6	P3	R033T	D033H
FE83DEZSLSUB	4M50-T8	Torque converter	M036A6	P3	R033T	D033H
FE83DGZSLSUB	4M50-T8	Torque converter	M036A6	P3	R033T	D033H
FE84DDZSLSUA	4M50-T7	C5W33	M036S5	P3	R033T	D033H
FE84DEZSLSUA	4M50-T7	C5W33	M036S5	P3	R033T	D033H
FE84DGZSLSUA	4M50-T7	C5W33	M036S5	P3	R033T	D033H
FE84DHZSLSUA	4M50-T7	C5W33	M036S5	P3	R033T	D033H
FE84DDZSLSUB	4M50-T8	Torque converter	M036A6	P3	R033T	D033H
FE84DEZSLSUB	4M50-T8	Torque converter	M036A6	P3	R033T	D033H
FE84DGZSLSUB	4M50-T8	Torque converter	M036A6	P3	R033T	D033H
FE84DHZSLSUB	4M50-T8	Torque converter	M036A6	P3	R033T	D033H
FE84DHWSLSUB	4M50-T8	Torque converter	M036A6	P3	R033T	D033H
FE85DDZSLSUC	4M50-T8	C5W33	M036S6	P3	R035T	D035H
FE85DEZSLSUC	4M50-T8	C5W33	M036S6	P3	R035T	D035H
FE85DGZSLSUC	4M50-T8	C5W33	M036S6	P3	R035T	D035H
FE85DHZSLSUC	4M50-T8	C5W33	M036S6	P3	R035T	D035H
FE85DJZSLSUC	4M50-T8	C5W33	M036S6	P3	R035T	D035H
FE85DDZSLSUB	4M50-T8	Torque converter	M036A6	P3	R035T	D035H
FE85DEZSLSUB	4M50-T8	Torque converter	M036A6	P3	R035T	D035H
FE85DGZSLSUB	4M50-T8	Torque converter	M036A6	P3	R035T	D035H
FE85DHZSLSUB	4M50-T8	Torque converter	M036A6	P3	R035T	D035H
FE85DJZSLSUB	4M50-T8	Torque converter	M036A6	P3	R035T	D035H
FG84DC6SLSUA	4M50-T7	C5W33	M036S5W	Front: P2 Rear: P3	R033T	Front: D1H Rear: D033H
FG84DE6SLSUA	4M50-T7	C5W33	M036S5W	Front: P2 Rear: P3	R033T	Front: D1H Rear: D033H

CHASSIS NUMBER, ENGINE NUMBER, POWER TRAIN LABEL

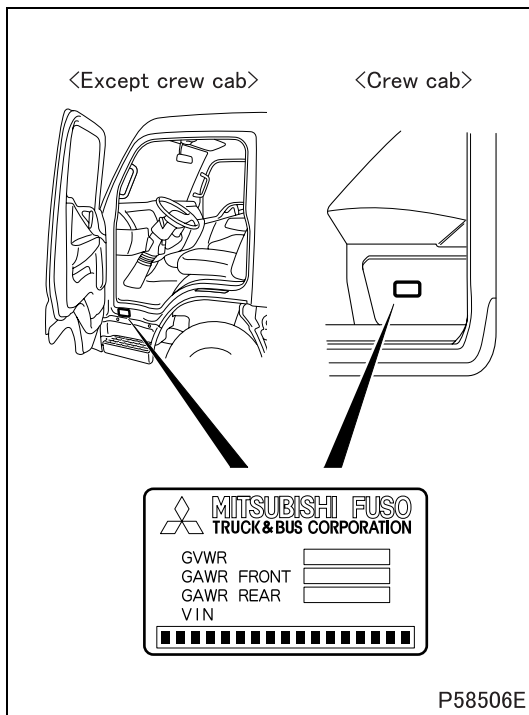
- Chassis and engine numbers are allocated to each vehicle and engine respectively in the order of production. These numbers are required at vehicle inspection for registration.



- Power train label located in the position illustrated indicates the vehicle model, chassis number and information relevant to the vehicle's power - train components.

VEHICLE IDENTIFICATION NUMBER

00



- The vehicle identification number is punch-marked on the plate, which is attached in the position as illustrated. The vehicle identification number consists of a 17-digit set of alphanumeric characters. Each digit represents the following specifications.

J **L** **6** **A** **A** **D** **1** **S** **■** **5** **K** **■** **■** **■** **■** **■**
 | | | | | | | | | | | | | | | |
 (1) (2) (3) (4) (5) (6) (7) (8) (9) (10) (11) (12)

- | | |
|---|--|
| (1) Country | J: Japan |
| (2) Make | L: Mitsubishi Fuso |
| (3) Type | 6: Incomplete vehicle |
| (4) Gross vehicle weight / Brake system | A: 10,001 to 14,000 lbs. / Hydraulic
B: 14,001 to 16,000 lbs. / Hydraulic
C: 16,001 to 19,500 lbs. / Hydraulic |
| (5) Line | A: FE83D
B: FE84D
C: FE85D |
| (6) Series (Wheel base) | D: 2.9 to 3.19 m (9.51 to 10.46 ft.)
E: 3.2 to 3.49 m (10.49 to 11.44 ft.) |
| (7) Cab chassis type | 1: Chassis cab |
| (8) Engine | S: 4.899 L Diesel turbo charged and charge air cooled |
| (9) Check digit | |
| (10) Model year | 5: 2005 |
| (11) Plant | K: Kawasaki |
| (12) Plant sequential number | |

SPECIFICATIONS

Item		Specifications	
Engine model		4M50T7	4M50T8
Type		4-cylinder, in-line, water-cooled, 4-cycle diesel engine	
Combustion chamber		Direct injection type	
Valve mechanism		Double overhead camshaft (DOHC)	
Maximum output	HP / rpm	147 / 2700	175 / 2700
Maximum torque	ft.lbf / rpm	347 / 1600	391 / 1600
Bore × stroke	mm {in.}	φ114 × 120 {φ4.49 × 4.72}	
Total displacement	L {qts}	4.899 {4899}	
Compression ratio		17.5	